

An Indigenous Model of Sustainability

November 17, 2023

Reuse Minnesota: Speaker Series

Presentation Outline

1. Working with tribes
2. Sustainability Models
3. Context for Menominee Model
4. Menominee Sustainability Model
5. Questions and Discussion

What are your personal values related to natural resources/environment?

- Place
- Species
- Activity
- Family History
- Feature (e.g. water or rock)
- Spirituality/religion
- Investment
- Other?

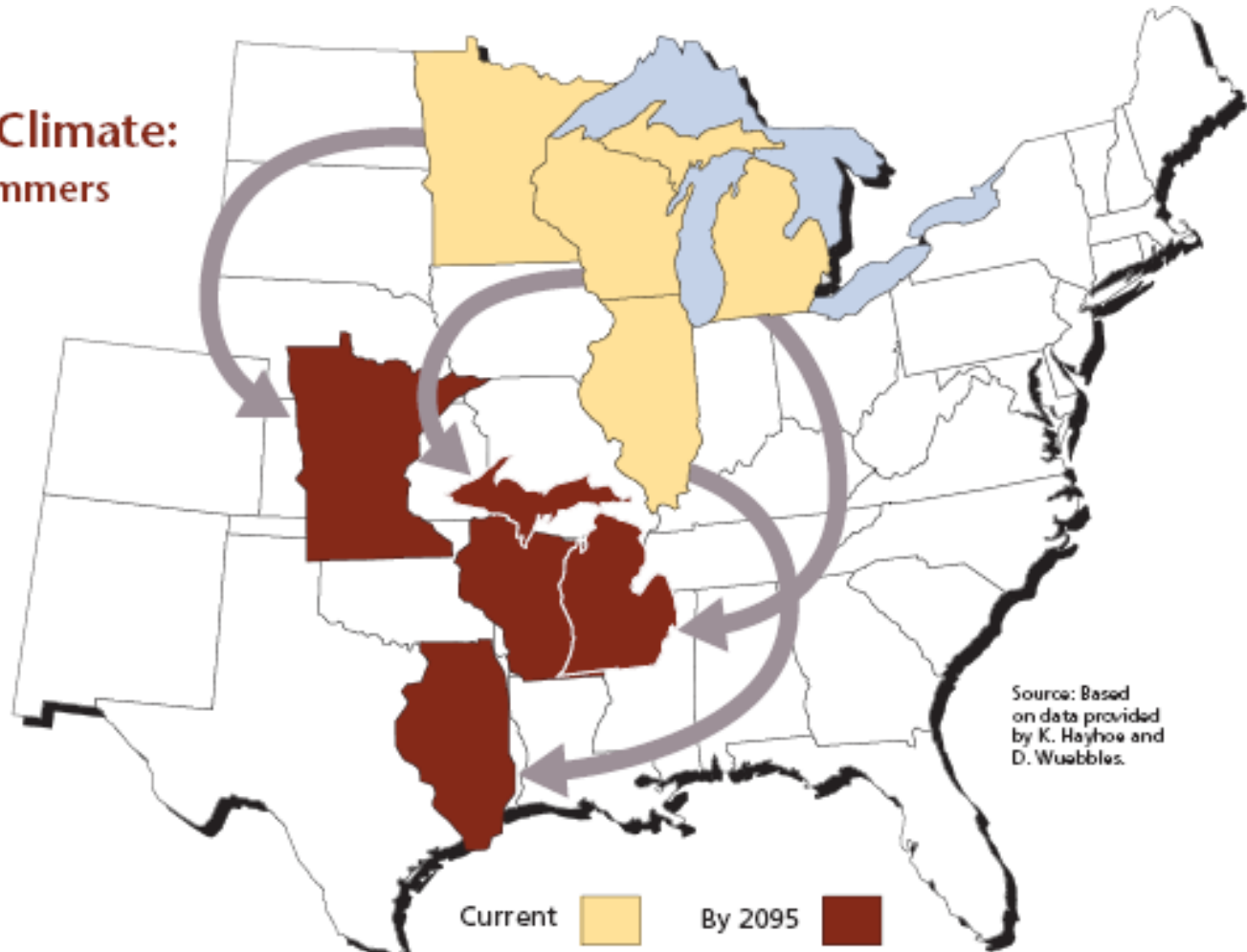


3 Perspectives on working with tribes:

#1: Tribes are diverse

#2: Tribes are resilient and forward thinking

**Migrating Climate:
Changing Summers
in the Region**



*Confronting Climate Change in the Great Lakes Region
(Kling et al. 2003)*

Potawatomi "Trail of Death"

march: Sept. – Nov. 1838



Designates 1838 Potawatomi "Trail of Death" route starting in Indiana, crossing Illinois and Missouri, and ending at present day Osawatomie, Kansas.

In September 1838 over 850 Potawatomi Indian people were rounded up and marched at gunpoint from their Indiana homeland. Many walked the 660-mile distance, which took two months. More than 40 died, mostly children, of typhoid fever and the stress of the forced removal.



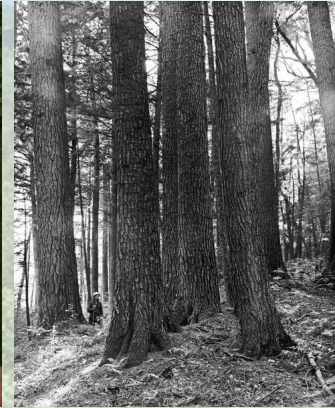
○ Dots on Trail are some of the 48 places where the Potawatomi people camped one night or more on the forced removal, and certain other locations mentioned in the official journal kept by a government agent.





#3: We are all related. Plants and animals are relatives.

Think about
what it means
to be
relatives



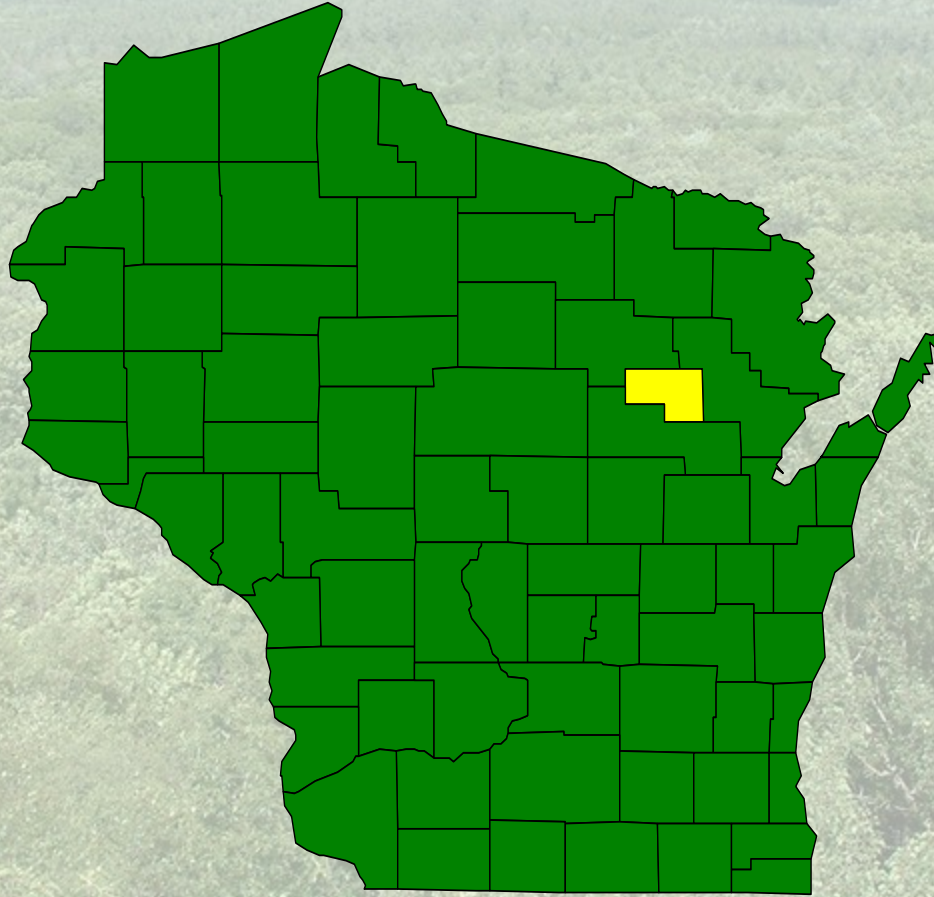


Brief History of Menominee Forest Management

- Ancestral land -14.5 million acres
- Indigenous to Wisconsin
- Fought to stay in their homeland
- Deep value of their homeland and tie to place



Menominee Reservation is
235,000 acres and 95% forested.



Menominee Nation

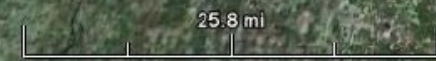


Image NOAA

Image USDA Farm Service Agency

Image © 2010 DigitalGlobe

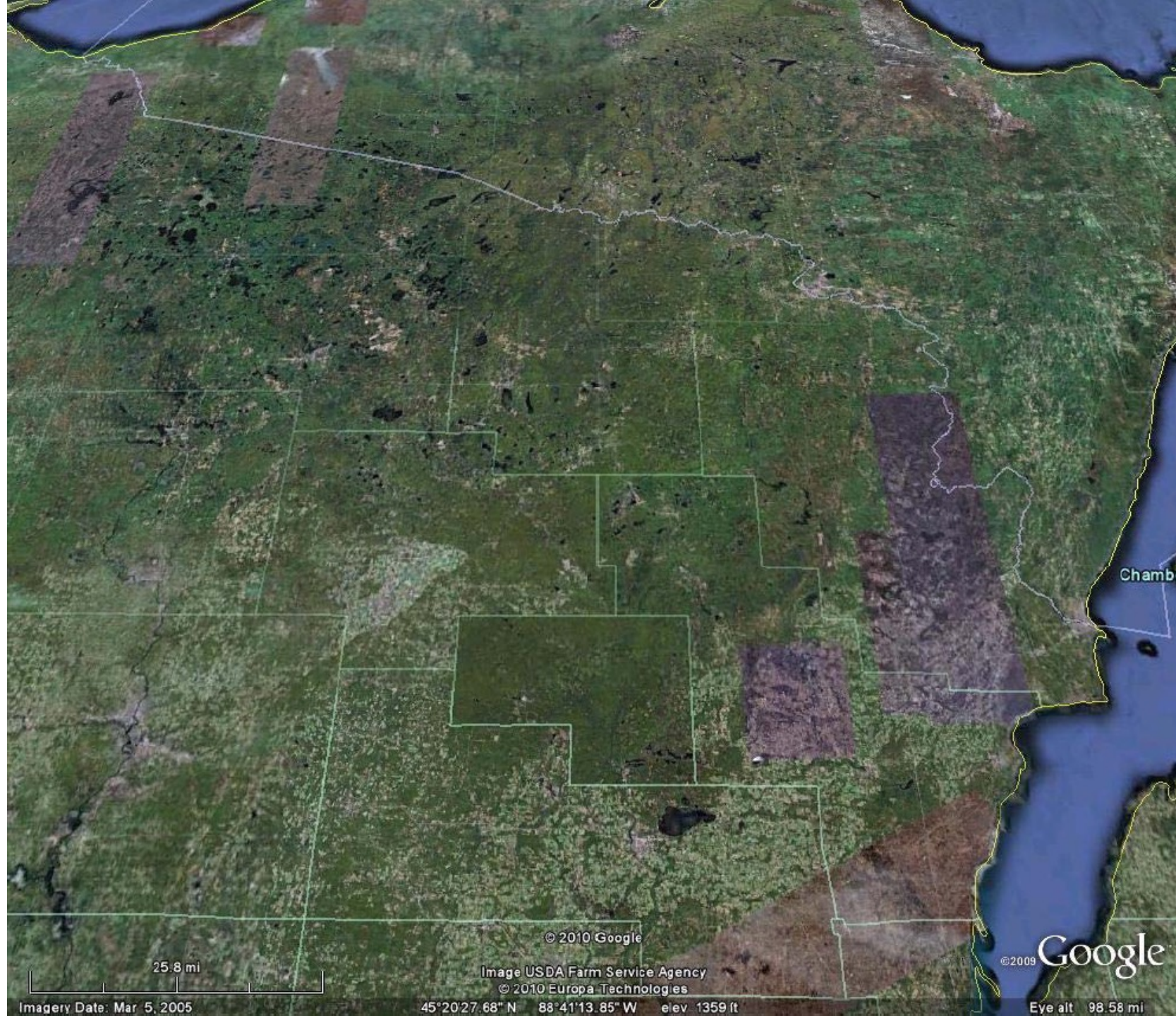
©2009 Google



Imagery Date: Mar 5, 2005

45°20'27.68" N 88°41'13.85" W elev 1359 ft

Eye alt 98.58 mi



Chambé

© 2010 Google

Image USDA Farm Service Agency
© 2010 Europa Technologies

©2009 Google

25.8 mi

Imagery Date: Mar 5, 2005

45°20'27.68" N 88°41'13.85" W elev 1359 ft

Eye alt 98.58 mi



From the time of the 1854 treaty until today, the Menominee have cut timber from their forest.



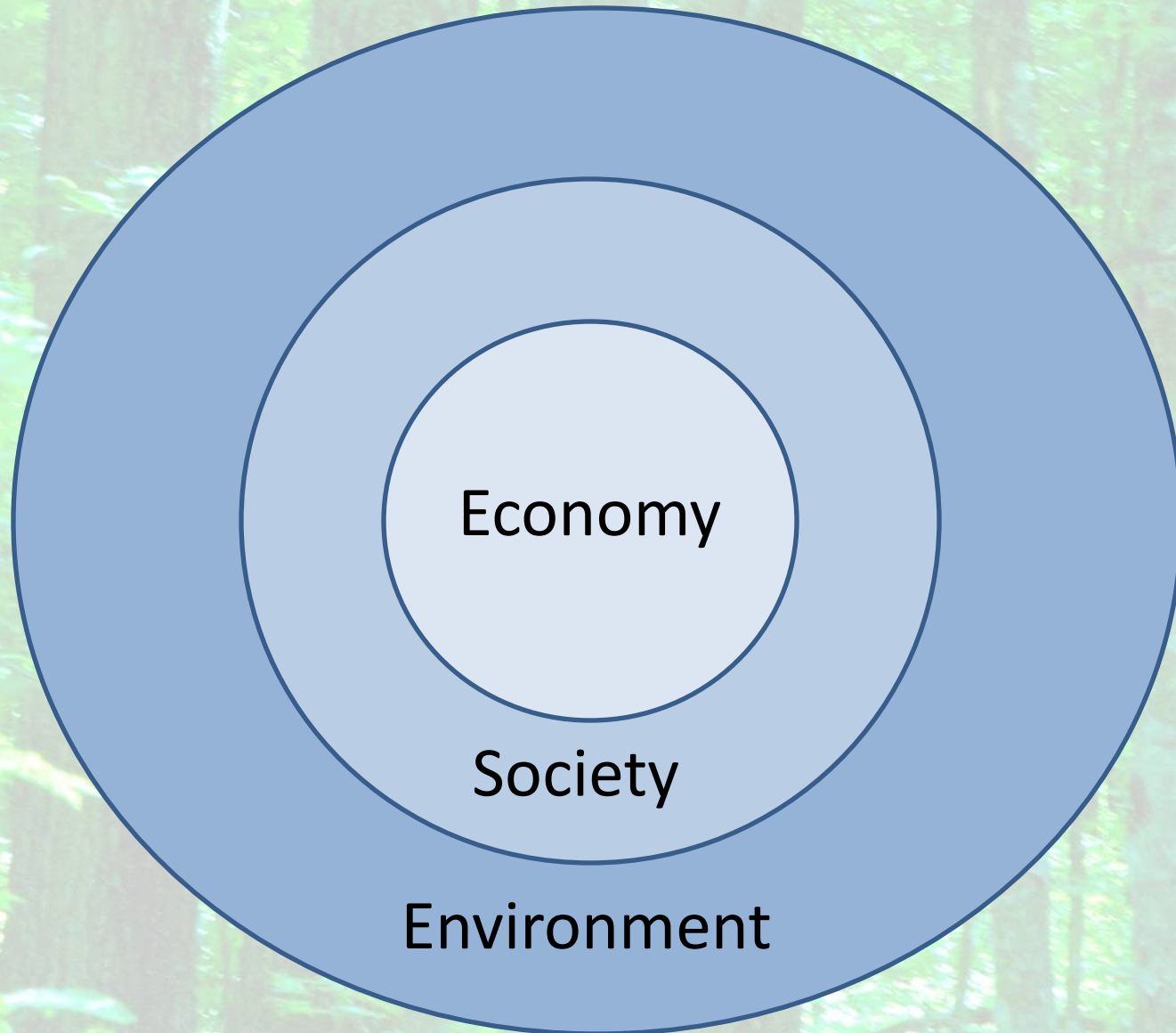
Sustainability Models



Sustainability Models



Sustainability Models



Understanding Menominee Sustainable Forest Management

- Created in the 1990s – College of Menominee Nation
- Explains key reasons for Menominee Sustainable Forest Management
- Academics, forest managers, community
- Provide a framework for understanding sustainability
- Integration of Indigenous Knowledge



College of Menominee Nation Sustainable Development Institute



Sustainable Development Model

Sustainable Development Institute Model

Sustainable Development Depends on 6 Interactive Dynamic Dimensions

Land and Sovereignty

Natural Environment

Institutions

Technology

Economy

Human Perception, Activity & Behavior



Sustainable Development Definition

Sustainable development is a process
of balancing tensions

Intersections illustrate tensions

As tensions are relieved, new
tensions arise

Sustainable development is a
continual and iterative process (like
Whytes TEK as process)



Sustainable Development Institute Model

**How have the Menominee
balanced the tensions?**



An aerial photograph of a vast, dense forest with a thick canopy of green trees. The horizon is visible in the distance under a bright blue sky with scattered white clouds. The text is overlaid on the upper left portion of the image.

What was your value? How would you think about that value balancing tensions in this model?



Sustainable Development Using the Model

The model can be used to construct a narrative

- Understand change over time
- Understand the present
- Understand multiple perspectives
- Create a vision for the future - Planning
- Formulate solutions
- Incorporate Indigenous Knowledges



Sustainable Development

Questions to ask:



Land and Sovereignty

- Does the community have control over their resources? In the past?
- Who makes decisions?
- How does this affect the other model elements?



Natural Environment

- How has the natural environment changed over time?
- How do people interact with the natural environment? In the past?
- How do these changes affect Institutions, Perceptions...?



Sustainable Development

Questions to ask:



Institutions

- How are community institutions organized? In the past?
- How have Institutions changed over time?
- How do the institutions affect Human perceptions, Natural Environment...?



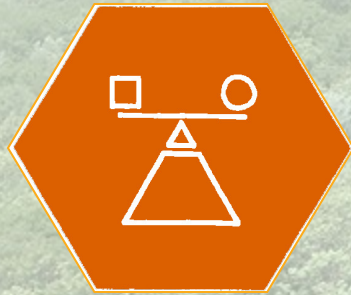
Technology

- How is technology used to influence natural environment, perceptions, institutions? In the past?
- How is technology used in a community?
- How has technology changed over time?



Sustainable Development

Questions to ask:



Economy

- How does the local economy work?
In the past?
- How is the global economy influence the local economy?
- How does the economy affect the other model elements?



Human Perception, Activity, and Behavior

- How do individuals perceive forest management? The community?
- How have perceptions and behaviors changed over time?
- How does this affect Institutions, Natural Environment...?



Sustainable Development

Questions to ask:

Autochthony or Sense of Place

- How does the community perceive their sense of place?
- How does sense of place affect other model elements?
- What are other community values that influence decisions?
- What are your own values that you use to balance tensions?



Sustainable Development Model Example



Natural Environment

- Past: Forest Diversity – Species and Ages – Fire and Wind
- White Pine and Aspen
- Regeneration Harvests or Clear Cutting



Human Perceptions

- Some positive perceptions about diversity
- Some positive perceptions about White Pine and Aspen
- Some negative perceptions about clear-cutting



Sustainable Development Model

Develop Solutions

How do you relieve tensions between Natural Environment
and Human Perceptions?

Change Human Perceptions

How?





Sustainable Development Using the Model

Questions/discussion

- What is the value your wrote down at the beginning?
- How can that value be used in this example?
- What other dimensions could relieve the tension?
- What are your organizations values?
- How could you use this in your work?





Sustainable Development Model Summary

- Model is based on Menominee experience
- Can be used to assess past and present situations and develop future solutions
- Can be used by researchers, planners, communities
- Dynamic and can incorporate scale, time, and complexity
- Can incorporate Indigenous Knowledge as a balancing factor

Discussion/Comments/Questions

